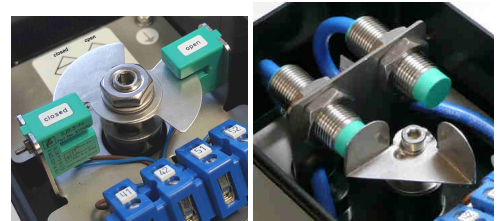


Ex i ... 8 V DC vestamide limit switch boxes, zone 1, 2 or 21, 22 for pneumatic rotary actuators



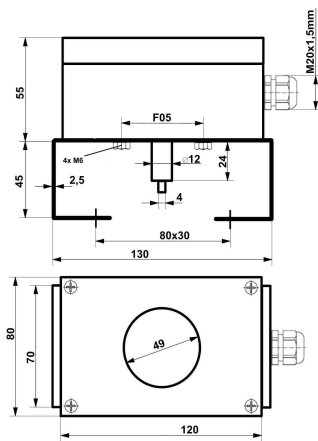
Pepperl+Fuchs sensors: left: 2x adjustable aluminium switching cams. right: 1x stainless steel switching cam for 0° and 90°. Other cams upon request.

technical data limit switch boxes

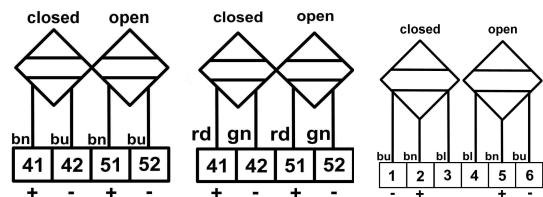
ATEX identification	II 2G Ex ia/ib IIC/IIB T6 Gb II 2D Ex ia/ib IIIC T 80 °C Db
ambient temperature range	- 25 °C ≤ T _a ≤ + 70 °C
protection class	IP 65
material housing	vestamide black, R _o ≤ 10 ⁹ Ω, RAL 9005
dimensions housing	120x80x55 mm
cable gland	M20x1,5 mm clamp range Ø 11-9,5 mm, Ø 9-7 mm, Ø 7-5,5 mm
mini-terminals	2x 2-pole and 2x 3-pole maximim 2,5 mm ²
weights	- limit switch box without ss bracket = 0,3 kg - limit switch box with ss bracket = 0,6 kg kg
options	- cover with window or closed cover - 2D indicator yellow - membrane vent for avoidance of condensation water - Harting connection = rapid changing the box
bracket connection	F05 slot
actuator connection	acc. to VDI/DE 3845, steam hight: 20, 30 and 50 mm, hole spacings 80x30 mm a. 130x30 mm

technical data limit switches

Pepperl+Fuchs sensor types	1) SJ 3,5-N, NCB2-12GM35-N0 2) SC 3,5-N0, SC 3,5-G-N0, SC 3,5- N0-BU 3) NJ2-12GK-N, NJ2-12GM-N 4) NJ 2-V3-N 5) SJ 3,5-SN, NJ2-12GK-SN 6) SJ 3,5-S1N, NJ3-18GK-S1N
nominal voltage	8 V DC
nominal current 1)-5)	detected ≤ 1 mA / undetected ≥ 3 mA
nominal current 6)	detected ≥ 3 mA / undetected ≤ 1 mA
switching range	0° + 90°, 0° + 180° or adjustable
output wire	2-wire 1)-6), 3-wire NJ3-18GK-S1N
switching function	NC 1)-5), NO 6)
output polarity	NAMUR 1)-4) safety function 5)-6)
acc. to IEC 61508	usable up to SIL2 1)-4), SIL3 5)-6)



dimensions



wiring diagrams: possible variations