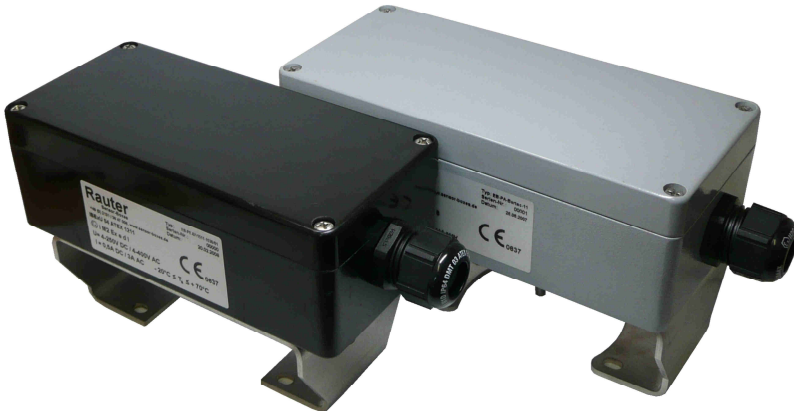


Ex eb db ... 4 - 250 V AC/DC limit switch boxes, zone 1, 2 or 21, 22 for pneumatic rotary actuators



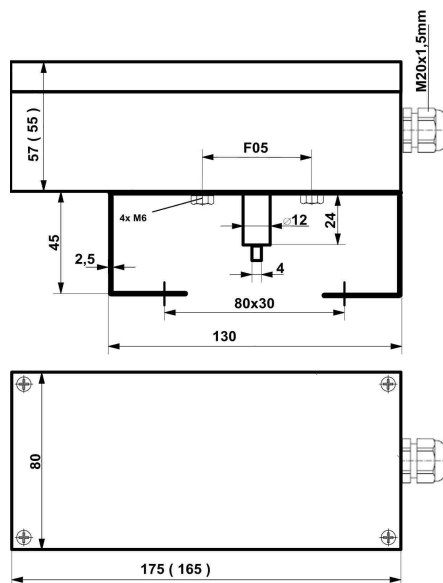
Bartec limit switches: 2x adjustable aluminium switching contacts

technical data limit switch boxes

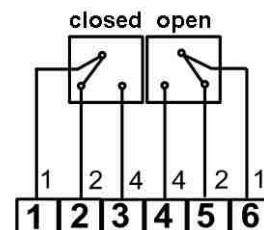
ATEX identification	
temperature range	- 20°C ≤ T _a ≤ + 70°C
protection class	IP 65
material housing	- PE = polyester black, R _o ≤ 10 ⁹ Ω, RAL 9005 - AL = aluminium = ALSi-12, grey RAL 7001
dimensions housing	PE = 165x75x55mm, AL = 175x80x57mm
cable gland	M20x1,5mm plastic black, Ø 13-7,0mm
weight without bracket	0,8 kg PE = 0,66kg, AL = 0,81kg
bracket connection	F05 slot
actuator connection	acc. to VDI/VDE 3845, steam hight 20, 30 and 50mm, hole spacing 80x30mm and 130x30mm

technical data limit switches

limit switch type	Bartec 07/1511-1530/01
voltage	4 - 250 V DC/AC
current	0,03 - 7 A
max. switching rate	1000 operations / h
switching range	0° + 90°, 0° + 180° or adjustable
output polarity	3-wire
switching function	changer



dimensions



wiring diagram