

## 4 - 250 V AC/DC mechanical limit switch boxes for pneumatic rotary- and linear actuators

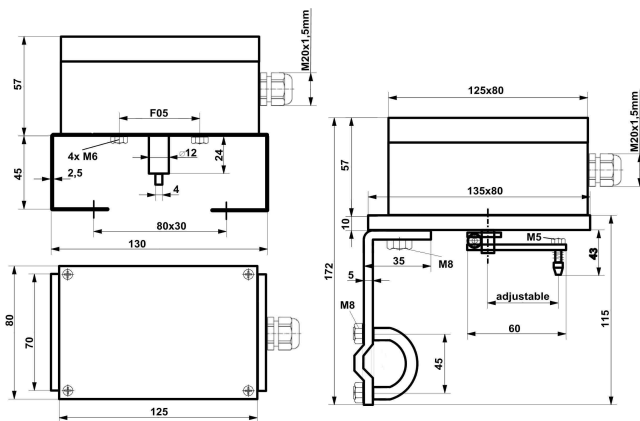


### technical data limit switch boxes

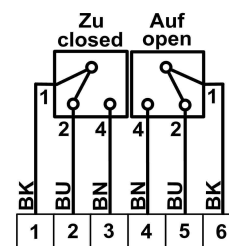
temperature range	- 20°C ≤ T <sub>a</sub> ≤ + 70°C
protection class	IP 65
material housing	AL = aluminium ALSi-12, grey RAL 7001 PA = polyamide white
dimensions housing	AL=125x80x57mm, PA=120x80x55mm
cable gland	M20x1,5mm plastic white or grey, Ø 13-8,0mm
weight without bracket	PA = 0,3kg or AL= 0,5kg
options	- 3D indicator yellow/black and red/black - 2D indicator yellow - aluminium housing with closed cover or cover with window
bracket connection	F05 slot
actuator connection	- acc. to VDI/VDE 3845, steam high: 20, 30 and 50mm, for hole space 80x30mm and 130x30mm - mounting set linear actuators acc. to NAMUR IEC 534

### technical data limit switches

Crouzet limit switch type	83161.338 with silver coated contacts 83161.806 with gold coated contacts
voltage	4 - 250 V DC/AC
current	max. 3 A I = 1 - 100 mA (only 83161.806)
switching range	0° + 90°, 0° + 180° or adjustable
output wire	3-wire
switching function	mechanical changer



dimensions



wiring diagram